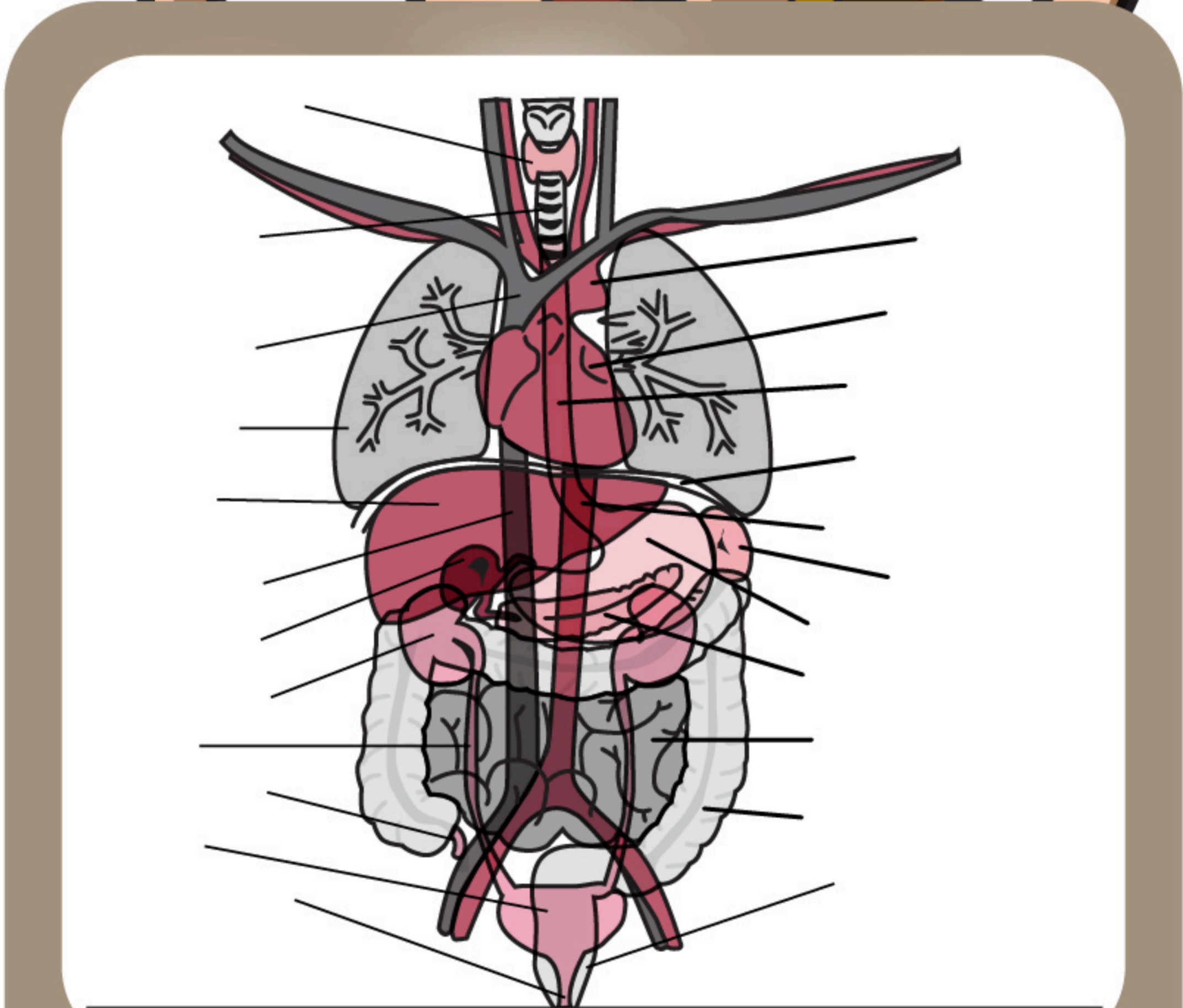


KNOW YOUR BODY PARTS

PART 2

You know the outside body parts very well but do you know the body parts on the inside? The body parts on the inside are just as important as the ones on the outside and you should know them. Do you know that what happens with the parts inside your body may affect what happens to the body parts on the outside?

Instructions: Label internal parts of the body.



Thyroid	Liver	Ureter	Aorta	Small Intestine
Trachea	Gall Bladder	Appendix	Heart	Spleen
Lung	Rectum	Bladder	Esophagus	Stomach
Kidney	Urethra	Diaphragm	Pancreas	Large Intestine
Superior Vena Cava		Inferior Vena Cava		

